

TS4-M



Monitoring Strings

TS4-M is one of five functional covers that pairs with an integrated modular junction box base (TS4-M), a single retrofit/add-on base (TS4-R-M), or a Duo retrofit/add-on base (TS4-R-M-Duo).

Features

- Reduced O&M cost
- Module bar code tracking
- Warranty tracking
- Fleet management
- CRM integration

PLUS the benefits of Diodes:

- Field replaceable and upgradeable
- Heat dissipation away from the module

Reduce O&M Costs on Commercial and Utility Projects

- Remotely detect and diagnose performance issues.
- Fix problems with a single truck roll: deploy the right person with the right skill level, equipment, and tools to service the site.

Reliable String-level Monitoring & Production Validation

- Alert notifications enable you to proactively intervene early and maximize system up time.

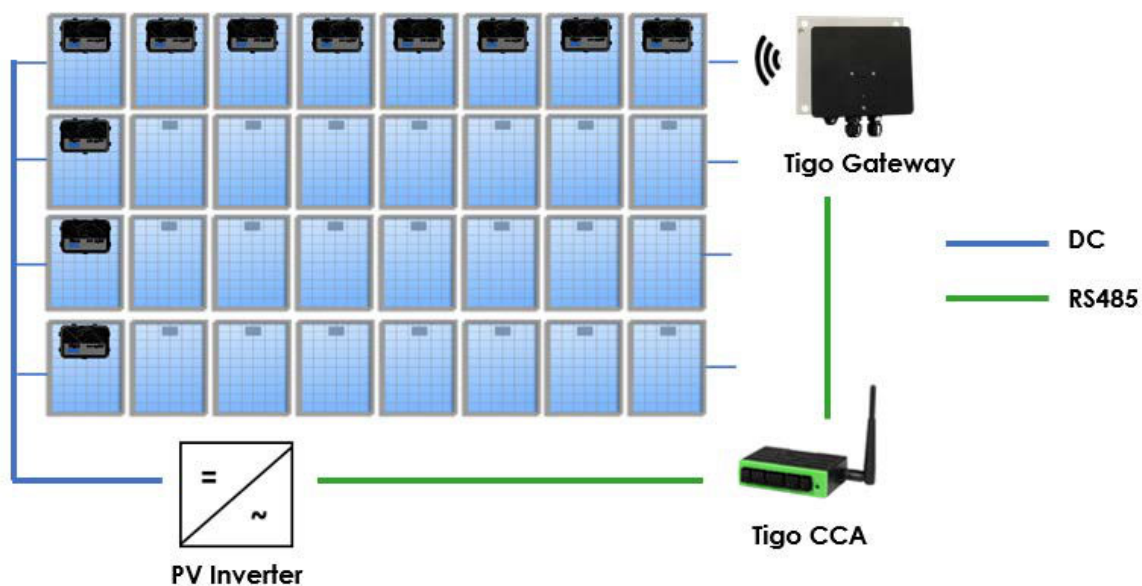




Utility and Commercial Applications

Minimal installation with TS4-M or TS4-R-M and Tigo communication accessories:

- One TS4-M unit per string measures current
- One complete string per MPPT with TS4-M on every module measures voltage

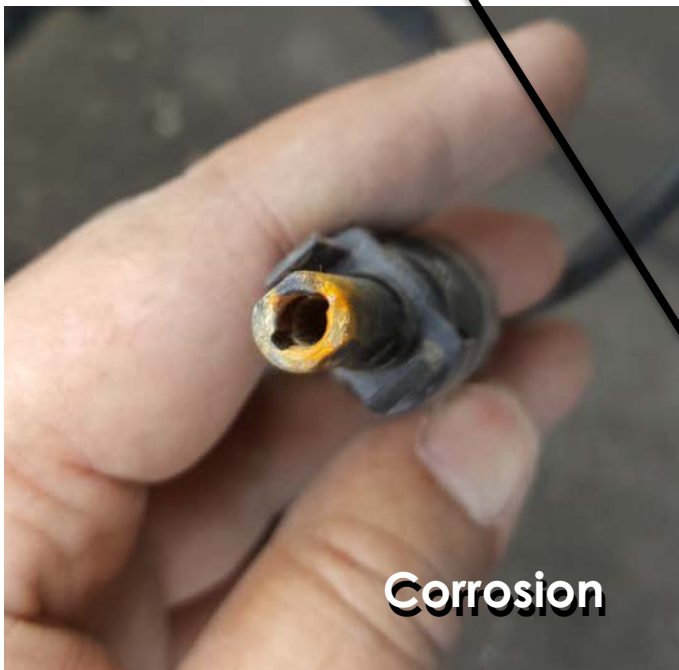
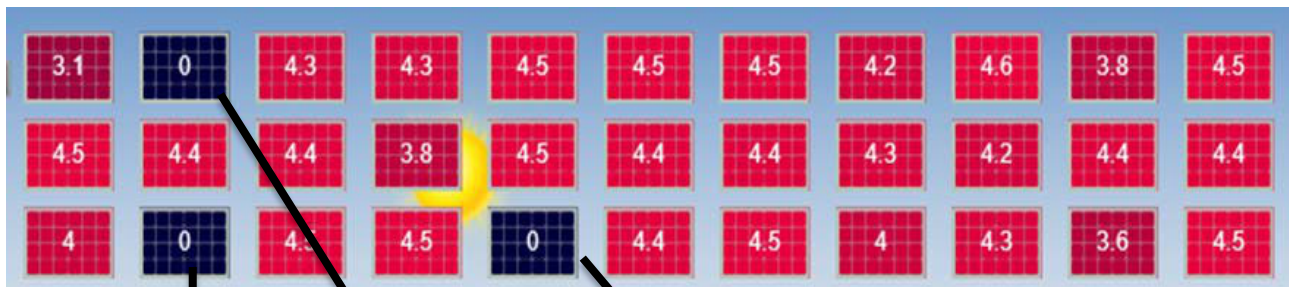


- Tigo's Cloud Connect Advanced (CCA) and Gateway support string-level monitoring and data collection
- An internet connection is necessary for string-level monitoring
- Manage module cleaning regimen
- Expedite service due to remote fault detection
- Create data reports for warranty claims



Isolating Hidden Problems

String-level monitoring often reveals hidden problems, such as the three dead strings in the example below. Without string monitoring, these problems can be very difficult to isolate.



Meet any projects' needs with the TS4 covers

Tigo has expanded its smart module platform to provide five levels of customization. TS4 increases your freedom of choice by allowing to select the right features for each project and budget.

ELECTRICAL RATINGS

| INPUT | |
|---|--------------|
| Rated DC Input Power | 475W |
| Maximum Input Voltage | 90V |
| Max. Continuous Input Current (I_{MAX}) | 12A |
| Maximum V_{OC} @ STC | 75V |
| Minimum V_{MP} | 16V |
| OUTPUT | |
| Output Power Range | 0 - 475W |
| Output Voltage Range | 0 - V_{OC} |
| Rapid Shutdown UL Listed (NEC 2014 & 2017 690.12) | No |
| Impedance Matching Function | No |
| Output Voltage Limit | No |
| Maximum System Voltage | 1500V |



MONITORING
TS4-M

Cloud Connect and Gateway required for rapid shutdown compliance.

For sales info:

sales@tigoenergy.com or 1.408.402.0802 ext. 1

For product info:

Visit www.tigoenergy.com/products

For technical info:

<http://support.tigoenergy.com>

For additional info and product selection assistance, use Tigo's online design tool at www.tigoenergy.com/design



Tigo[®]

PV 2.0