

HiHero

N-type Heterojunction Technology

420 W ~ 445 W

CS6R-420 | 425 | 430 | 435 | 440 | 445H-AG

MORE POWER



Module efficiency up to 22.8%, maximize the use of rooftop space



No B-O LID, excellent anti-LeTID & anti-PID performance. Low power degradation, high energy yield



Leading temperature coefficient (Pmax): -0.26%/°C, increases energy yield in hot climate



Better shading tolerance

MORE RELIABLE



Minimizes micro-crack impacts



Heavy snow load up to 5400 Pa, enhanced wind load up to 2400 Pa*



Industry Leading Product Warranty on Materials and Workmanship*



Linear Power Performance Warranty*

**1st year power degradation no more than 1%
Subsequent annual power degradation no more than 0.35%**

*According to the applicable Canadian Solar Limited Warranty Statement.

MANAGEMENT SYSTEM CERTIFICATES*

ISO 9001: 2015 / Quality management system
ISO 14001: 2015 / Standards for environmental management system
ISO 45001: 2018 / International standards for occupational health & safety
IEC 62941: 2019 / Photovoltaic module manufacturing quality system

PRODUCT CERTIFICATES*

IEC 61215 / IEC 61730 / CE / MCS / UKCA
IEC 61701 / IEC 62716
Take-e-way



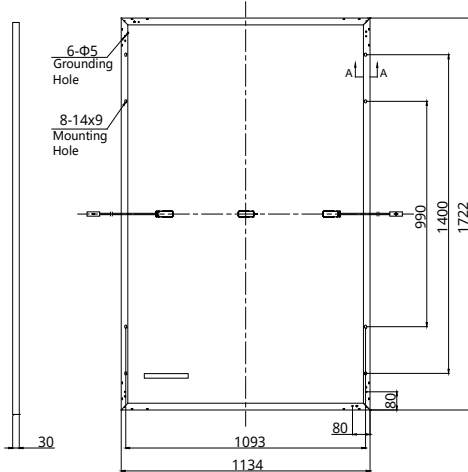
* The specific certificates applicable to different module types and markets will vary, and therefore not all of the certifications listed herein will simultaneously apply to the products you order or use. Please contact your local Canadian Solar sales representative to confirm the specific certificates available for your Product and applicable in the regions in which the products will be used.

* For detailed information, please refer to the Installation Manual.

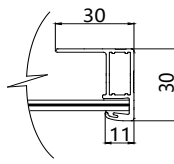
CSI Solar Co., Ltd. is committed to providing high quality solar photovoltaic modules, solar energy and battery storage solutions to customers. The company was recognized as the No. 1 module supplier for quality and performance/price ratio in the IHS Module Customer Insight Survey. Over the past 22 years, it has successfully delivered over 88 GW of premium-quality solar modules across the world.

ENGINEERING DRAWING (mm)

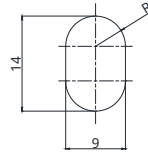
Rear View



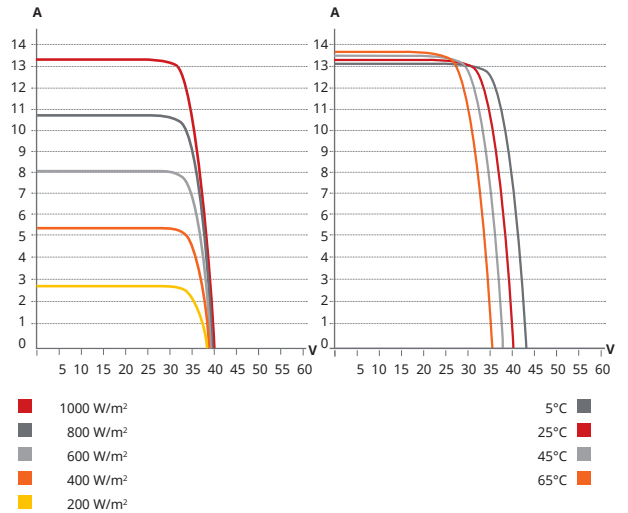
Frame Cross Section A-A



Mounting Hole



CS6R-425H-AG / I-V CURVES



ELECTRICAL DATA | STC*

CS6R	420H-AG	425H-AG	430H-AG	435H-AG	440H-AG	445H-AG
Nominal Max. Power (Pmax)	420 W	425 W	430 W	435 W	440 W	445 W
Opt. Operating Voltage (Vmp)	33.7 V	33.7 V	33.8 V	33.8 V	33.9 V	33.9 V
Opt. Operating Current (Imp)	12.48 A	12.62 A	12.76 A	12.89 A	13.02 A	13.15 A
Open Circuit Voltage (Voc)	40.1 V	40.1 V	40.1 V	40.2 V	40.2 V	40.3 V
Short Circuit Current (Isc)	13.28 A	13.33 A	13.38 A	13.43 A	13.48 A	13.53 A
Module Efficiency	21.5%	21.8%	22.0%	22.3%	22.5%	22.8%
Operating Temperature	-40°C ~ +85°C					
Max. System Voltage	1500V (IEC) or 1000V (IEC)					
Module Fire Performance	CLASS C (IEC61730)					
Max. Series Fuse Rating	25 A					
Application Classification	Class A					
Power Tolerance	0 ~ + 10 W					

* Under Standard Test Conditions (STC) of irradiance of 1000 W/m², spectrum AM 1.5 and cell temperature of 25°C.

ELECTRICAL DATA | NMOT*

CS6R	420H-AG	425H-AG	430H-AG	435H-AG	440H-AG	445H-AG
Nominal Max. Power (Pmax)	321 W	325 W	329 W	332 W	336 W	340 W
Opt. Operating Voltage (Vmp)	32.3 V	32.3 V	32.3 V	32.4 V	32.4 V	32.5 V
Opt. Operating Current (Imp)	9.95 A	10.06 A	10.17 A	10.27 A	10.37 A	10.47 A
Open Circuit Voltage (Voc)	38.1 V	38.1 V	38.2 V	38.2 V	38.3 V	38.3 V
Short Circuit Current (Isc)	10.70 A	10.74 A	10.78 A	10.82 A	10.86 A	10.90 A

* Under Nominal Module Operating Temperature (NMOT), irradiance of 800 W/m² spectrum AM 1.5, ambient temperature 20°C, wind speed 1 m/s.

* The specifications and key features contained in this datasheet may deviate slightly from our actual products due to the on-going innovation and product enhancement. CSI Solar Co., Ltd. reserves the right to make necessary adjustment to the information described herein at any time without further notice. Please be kindly advised that PV modules should be handled and installed by qualified people who have professional skills and please carefully read the safety and installation instructions before using our PV modules.

MECHANICAL DATA

Specification	Data
Cell Type	HJT cells
Cell Arrangement	108 [2 X (9 X 6)]
Dimensions	1722 X 1134 X 30 mm (67.8 X 44.6 X 1.18 in)
Weight	23.0 kg (50.7 lbs)
Front Glass	2.0 mm heat strengthened glass with anti-reflective coating
Back Glass	1.6 mm heat strengthened glass
Frame	Anodized aluminium alloy
J-Box	IP68, 3 bypass diodes
Cable	4 mm ² (IEC)
Cable Length (Including Connector)	Portrait: 350 mm (13.8 in) (+) / 250 mm (9.8 in) (-); landscape: 1100 mm (43.3 in)*
Connector	T6 or MC4 or MC4-EVO2 or MC4-EVO2A
Per Pallet	35 pieces
Per Container (40' HQ)	910 pieces

* For detailed information, please contact your local Canadian Solar sales and technical representatives.

TEMPERATURE CHARACTERISTICS

Specification	Data
Temperature Coefficient (Pmax)	-0.26 % / °C
Temperature Coefficient (Voc)	-0.24 % / °C
Temperature Coefficient (Isc)	0.04 % / °C
Nominal Module Operating Temperature	41 ± 3°C

PARTNER SECTION



Iris Hellas
Technology Innovations
www.irishellas.com

LIMITED WARRANTY STATEMENT PHOTOVOLTAIC MODULE PRODUCTS HIHERO SERIES

For the photovoltaic solar module products of the following module types delivered under the sales contract or purchase order signed on and after Mar 15th, 2022, CSI Solar Co., Ltd. (hereinafter referred to as "CSI Solar") will provide warranty in accordance with this <LIMITED WARRANTY STATEMENT PHOTOVOLTAIC MODULE PRODUCTS HIHERO SERIES> (hereinafter referred to as "Limited Warranty Statement").

This Limited Warranty Statement applies only to the following module types ("Products") of CSI Solar: CS6R-XXXH-AG, "XXX" in the aforementioned module type denotes the rated output of the module (Pmax), for example "CS6R-415H-AG".

This Limited Warranty Statement applies only to Products sold to and installed in a member state in the European Economic Area, the European Free Trade Association and the European Union, as well as United Kingdom ("Europe").

TWENTY-FIVE (25) YEAR LIMITED PRODUCT WARRANTY

Subject to the limitations & exclusions contained herein, CSI Solar warrants to the original buyer (the "Buyer") of the Products listed above that, for twenty five (25) years after the Warranty Start Date, the Products shall be free from defects in materials and workmanship which have an adverse effect on Products functionality under normal application, installation, use, and service conditions as specified in CSI Solar's standard product documentation such as the installation manual and its annexes.

Claims under the above warranties will only be accepted if the Buyer can prove that the malfunctioning or non-conformity of the Products results exclusively from defects in materials and/or workmanship under normal application, installation, use and service conditions specified in CSI Solar's standard product documentation. This Limited Product Warranty does not warrant a specific power output of the Products, which shall be exclusively covered under the Limited Performance Warranty elaborated below.

THIRTY (30) YEAR LIMITED PERFORMANCE WARRANTY

CSI Solar warrants that for a period of thirty (30) years from the Warranty Start Date, the Products listed above will maintain a level of performance as set forth below:

- During the first year, CSI Solar warrants the actual power output of the Products will be no less than 99% of the labeled power output.
- From year 2 to year 30, the actual annual power decline will be no more than 0.35%; by the end of year 30, the actual power output will be no less than 88.85% of the labeled power output.

The actual power output of the Products shall be determined for verification using Standard Testing Conditions only. Testing equipment uncertainty shall be taken into account and applied to all actual power output measurements.

WARRANTY START DATE

The foregoing "LIMITED PRODUCT WARRANTY" and "LIMITED PERFORMANCE WARRANTY" are respectively and jointly referred to as "limited warranty" or "warranty". The Warranty Start Date shall be the day after the completion of the first installation of the Products or 90 days after the delivery (Incoterms of 2020) of the Products to the Buyer, whichever date is earlier.

The warranty period is calculated based on calendar years. For example, the first year of the warranty period is from the Warranty Start Date to the 365th day, and so on.

EXCEPTIONS

The limited warranties set forth herein **DO NOT** apply to any Products: 1) for which CSI Solar has not received all or part of the due payments from the Buyer; 2) unable to provide the purchase proofs, Products information and other information or materials that can prove the claim is valid; 3) which have been subject to negligence in transportation, handling, storage or use; 4) which have been repaired without CSI Solar's authorization or in any way tampered with; 5) which have been subject to extraordinary hot, salt or chemical exposure; 6) which have been subject to improper installation, application, alteration or unauthorized service according to the local laws and regulations or CSI Solar's standard product documentation, or improper system design which caused constant shading to the Products; 7) which have been subject to power failure or surges, flood, fire, direct or indirect lightning strikes, , accidental breakage, vandalism, explosions, acts of war, or other events outside CSI Solar's control; 8) which have been moved from its original installation location; 9) third party components that are connected with the Products or the components of the construction on which the Products are mounted have defects; or 10) installed on mobile units (except photovoltaic tracking system), such as vehicles, ships or offshore-structures.

In addition, the limited warranties do not apply to any deterioration in the appearance of the Products (including, without limitation, any scratches, stains, rust, discoloration, or mold) or any other changes to the Products in appearance stemming from the normal wear and tear over time of product materials. Also, no warranty claim may be made if the product label, type or serial number of the applicable Products has been altered, removed or made illegible.

REMEDIES

In respect of the Twenty five (25) Year Limited Product Warranty, if CSI Solar verifies in its reasonable judgment that the Products fail to conform to the terms of the Limited Product Warranty set forth herein, CSI Solar, at its option, will provide one of the following remedies: 1) repair the Products; 2) replace the Products with new products whose labeled power wattages equal to or exceed the Warranted Wattages of replaced Products (the Warranted Wattages is defined as the labeled power wattages of the Products minus the permissible accumulated degradation); or 3) provide a refund of the fair market value of the Products assessed based on the Warranted Wattages at the time of claim.

In respect of the Thirty (30) Year Limited Performance Warranty, if CSI Solar verifies in its reasonable judgment that the Products fail to conform to the terms of the Limited Performance Warranty set forth herein, CSI Solar, at its option, will provide one of the following remedies: 1) repair the Products; 2) replace the Products with new products whose labeled power wattages equal to or exceed the Warranted Wattages of replaced Products; 3) provide additional Products to make up the wattage difference between the actual measured power output wattages at the time of claim and the Warranted Wattages; or 4) provide a refund of the fair market value of the wattage difference between the actual measured power output wattages at the time of claim and the Warranted Wattages.

All remedies under this limited warranty statement shall be calculated based upon the Warranted Wattages of the Products at the time of first reporting of the warranty claim.

CSI Solar will not accept any return of Products without CSI Solar's prior authorization. Once accepted, CSI Solar will cover reasonable transportation costs (except for insurance, any taxes, duties, demurrages, or any other costs and expenses related to custom clearance or Buyer's failure to cooperate) for shipping the Products under a claim back from the Buyer to a designated location of CSI Solar, and for shipping the additional, repaired or replacement Products to the original installation location. If CSI Solar opts for repair as the remedy, CSI Solar shall cover reasonable material and labor costs related to the repair. In any event, the costs and expenses for the removal, installation, and/or reinstallation of the Products, including fees, levies, taxes or other financial duties due in relation to any applicable electronic waste disposal regulation, shall remain with the Buyer, unless otherwise agreed to by CSI Solar in a signed writing. CSI Solar will not pay any cost of any fees, levies, taxes or other financial duties imposed on the remedies implemented by CSI Solar or imposed on the Products subject to such remedies, that are due to regulatory, government or judicial decisions not existing at the time of purchase of the affected Products.

Any repair or replacement of the affected Products shall not increase the applicable warranty period. The warranty period for replaced or repaired Products is the remainder of the warranty for the affected Products. CSI Solar reserves the right to deliver a similar product (of similar size, color, shape, and/or power output) in replacement of the affected Products if production of the affected Products is discontinued or such product is otherwise unavailable. Unless instructed by CSI Solar otherwise, Buyer shall dispose of Products in accordance with all local applicable regulations on electronic waste treatment and disposal at its own cost. Products having been replaced shall not be sold, reworked or reused in any way, unless expressly authorized by CSI Solar.

EXCEPT AS OTHERWISE PROVIDED BY APPLICABLE LAW, THE FOREGOING REMEDIES STATE CSI SOLAR'S SOLE AND EXCLUSIVE OBLIGATION AND THE BUYER'S SOLE AND EXCLUSIVE REMEDY FOR A BREACH OF THE FOREGOING LIMITED WARRANTIES.

CLAIM PROCESS

If the Buyer believes that it has a justified claim covered by the limited warranties set forth above, then the Buyer shall submit such claim in writing without undue delay, with supporting information including but not limited to the claimed quantity, serial numbers, purchasing invoices and proofs, to CSI Solar within the applicable warranty period specified above to the following address, or such future address as CSI Solar may provide from time to time:

Canadian Solar EMEA GmbH
Customer Service Department
Radlkofenstraße 2, 81373 Munich, Germany
Tel: +49 89 5199689 0
E-mail: service.emea@csisolar.com

Upon receipt of such written claim, CSI Solar may seek further verification of the Buyer's claim of a breach of one of the foregoing limited warranties. If it is necessary to send the Products to a third-party testing institute for verification, the testing institute shall be ISO/IEC 17025:2017 accredited and mutually agreed in advance.

WARRANTY ASSIGNMENT

This Limited Warranty is transferrable to a party taking legal title to the Products, provided that the Products remain installed in their original installation location.

DISPUTE RESOLUTION

In case of any dispute related to warranty claims, such dispute shall be referred to and finally resolved pursuant to the governing law clauses and dispute resolution procedures under the purchase agreement between the Buyer and CSI Solar to which the relevant Products belong.

FORCE MAJEURE

Force majeure refers to unforeseeable, unavoidable and insurmountable objective conditions, including but not limited to war, riot, strike, epidemic situation, quarantine, traffic control and other social events; Natural disasters such as earthquake, fire, flood, snowstorm, hurricane, thunder and lightning, natural disaster, etc.; Or due to the lack of appropriate or sufficient labor force, shortage of raw materials or inability in production capacity, technology or output; Or delay caused by national laws, regulations, administrative rules or orders, and any unforeseen events beyond the control of CSI Solar.

Due to the occurrence or continuation of force majeure, CSI Solar may be unable to perform or may have delays in performing its obligations under this limited warranty statement. In this case, CSI Solar's obligations to perform will be wholly or partly excused according to the relevant applicable laws or contracts with the Buyer. However, CSI Solar shall timely inform the Buyer of the occurrence of force majeure and negotiate with the Buyer to take necessary measures to minimize the impact of force majeure.

NOT INDEPENDENT WARRANTIES

The Buyer has the right to pursue claims under each of the warranties set forth above; provided that if claims arise under multiple limited warranties from a single defect, then if CSI Solar remedies that defect as set forth above, CSI Solar shall be deemed to have resolved all applicable warranty claims arising from that defect.

DISCLAIMERS

THE LIMITED WARRANTIES SET FORTH HEREIN ARE IN LIEU OF AND EXCLUDE ALL OTHER EXPRESS OR IMPLIED WARRANTIES, INCLUDING BUT NOT LIMITED TO WARRANTIES OF MERCHANTABILITY AND FITNESS FOR A PARTICULAR PURPOSE OR APPLICATION, AND ALL OTHER OBLIGATIONS ON THE PART OF CSI SOLAR UNLESS SUCH OTHER WARRANTIES AND OBLIGATIONS ARE AGREED TO IN WRITING BY CSI SOLAR. SOME JURISDICTIONS LIMIT OR DO NOT PERMIT DISCLAIMERS OF WARRANTY, SO THIS PROVISION MAY NOT APPLY TO THE BUYER IN SUCH JURISDICTIONS.

LIMITATION OF LIABILITY

TO THE MAXIMUM EXTENT PERMITTED BY APPLICABLE LAW, CSI SOLAR HEREBY DISCLAIMS, AND SHALL HAVE NO RESPONSIBILITY OR LIABILITY WHATSOEVER FOR, DAMAGE OR INJURY TO PERSONS OR PROPERTY OR FOR OTHER LOSS OR INJURY RESULTING FROM ANY CAUSE WHATSOEVER ARISING OUT OF OR RELATED TO ANY OF ITS PRODUCTS OR THEIR USE. TO THE MAXIMUM EXTENT PERMITTED BY APPLICABLE LAW, UNDER NO CIRCUMSTANCES SHALL CSI SOLAR BE LIABLE TO THE BUYER, OR TO ANY THIRD PARTY CLAIMING THROUGH OR UNDER THE BUYER, FOR ANY LOST PROFITS, LOSS OF USE, OR EQUIPMENT DOWNTIME, OR FOR ANY INCIDENTAL, CONSEQUENTIAL OR SPECIAL DAMAGES OF ANY KIND, HOWSOEVER ARISING, RELATED TO THE PRODUCTS, EVEN IF CSI SOLAR HAS BEEN ADVISED OF THE POSSIBILITY OF SUCH DAMAGES.

TO THE MAXIMUM EXTENT PERMITTED BY APPLICABLE LAW, CSI SOLAR'S AGGREGATE LIABILITY, IF ANY, IN DAMAGES OR OTHERWISE, SHALL NOT EXCEED THE PURCHASE PRICE PAID TO CSI SOLAR BY THE BUYER FOR THE PRODUCT IN THE CASE OF A WARRANTY CLAIM.

THE BUYER ACKNOWLEDGES THAT THE FOREGOING LIMITATIONS OF LIABILITY ARE AN ESSENTIAL ELEMENT OF THE AGREEMENT BETWEEN THE PARTIES AND THAT IN THE ABSENCE OF SUCH LIMITATIONS THE PURCHASE PRICE OF THE PRODUCTS WOULD BE SUBSTANTIALLY DIFFERENT. SOME JURISDICTIONS LIMIT OR DO NOT PERMIT DISCLAIMERS OF LIABILITY, SO THIS PROVISION MAY NOT APPLY TO THE BUYER IN SUCH JURISDICTIONS. SOME JURISDICTIONS DO NOT ALLOW LIMITATIONS ON THE EXCLUSION OF DAMAGES SO THE ABOVE LIMITATIONS OR EXCLUSIONS MAY NOT APPLY TO THE BUYER IN SUCH JURISDICTIONS.

YOU MAY HAVE SPECIFIC LEGAL RIGHTS OUTSIDE THIS WARRANTY, AND YOU MAY ALSO HAVE OTHER RIGHTS THAT VARY FROM STATE TO STATE OR COUNTRY TO COUNTRY. THIS LIMITED WARRANTY DOES NOT AFFECT ANY ADDITIONAL RIGHTS YOU HAVE UNDER LAWS IN YOUR JURISDICTION GOVERNING THE SALE OF CONSUMER GOODS. SOME STATES OR COUNTRIES DO NOT ALLOW THE EXCLUSION OR LIMITATION OF INCIDENTAL OR CONSEQUENTIAL DAMAGES, SO THE LIMITATIONS OR EXCLUSIONS IN THIS LIMITED WARRANTY STATEMENT MAY NOT APPLY TO YOU IN THOSE AREAS.

NOTE

In the event of any inconsistency among different language versions of this warranty statement, the English version shall prevail.

The installation and handling of PV Products requires professional skills and should only be performed by qualified professionals. Please read the safety and installation instructions before using the Products.

Declaration of Conformity

Directive 2014/35/EU (Low Voltage)



Canadian Solar EMEA GmbH

EN: We (name of the supplier)
DE: Wir (Name des Anbieters)
FR: Nous (Nom du fournisseur)
IT: Noi (Nome del fornitore)

Radlkofersstrasse 2, 81373 Munich, Germany

Address
Anschrift
Adresse
Indirizzo

declare under sole responsibility that the product
erklären in alleiniger Verantwortung, dass das Produkt
déclarons sous notre seule responsabilité, que le produit
dichiara sotto la propria esclusiva responsabilità che il prodotto

Type, Model, Article No.
Typ, Modell, Artikel-Nr.
Type, Modèle, No. d'Article
Tipo, Modello, numero di articolo

Photovoltaic Modules Models:

Photovoltaik Modul-Typen:
Modèles de modules photovoltaïques

Modelli die moduli fotovoltaici:

A)	CS6U-XXXXM-AG	T)	CS3K-XXXXMB-AG
B)	CS6K-XXXXM-AG	U)	CS3U-XXXXPB-FG
C)	CS6U-XXXXP-AG	V)	CS3K-XXXXPB-FG
D)	CS6K-XXXXP-AG	W)	CS3U-XXXXPB-AG
E)	CS6X-XXXXM-FG	X)	CS3K-XXXXPB-AG
F)	CS6K-XXXXM-FG	Y)	CS6U-XXXXMB-FG
G)	CS6X-XXXXP-FG	Z)	CS6K-XXXXMB-FG
H)	CS6K-XXXXP-FG	AA)	CS6U-XXXXPB-FG
I)	CS3U-XXXXMS-FG	AB)	CS6K-XXXXPB-FG
J)	CS3U-XXXXP-FG	AC)	CS3U-XXXXMB-FG (IEC 1500V)
K)	CS3K-XXXXMS-FG	AD)	CS3U-XXXXMB-AG (IEC 1500V)
L)	CS3K-XXXXP-FG	AE)	CS3U-XXXXPB-FG (IEC 1500V)
M)	CS3U-XXXXMS-AG	AF)	CS3U-XXXXPB-AG (IEC 1500V)
N)	CS3U-XXXXP-AG	AG)	CS3U-XXXXP-FG (IEC 1000V)
O)	CS3K-XXXXMS-AG	AH)	CS3U-XXXXMS-FG (IEC 1000V)
P)	CS3K-XXXXP-AG	AI)	CS6X-XXXXP-FG (IEC 1000V)
Q)	CS3U-XXXXMB-FG	AJ)	CS6K-XXXXP-FG (IEC 1000V)
R)	CS3K-XXXXMB-FG	AK)	CS3W-XXXXPB-AG
S)	CS3U-XXXXMB-AG	AL)	CS3L-XXXXPB-AG

CANADIAN SOLAR EMEA GMBH

Radlkofersstrasse 2, 81373 Munich, Germany
Sitz / Registered Office: Munich, Registergericht / Registry Court: District Court Munich HRB 181 167,
Geschäftsführung / General Manager: Susanne Pflug
P +49 89 5199 6890

Declaration of Conformity

Directive 2014/35/EU (Low Voltage)



AM)	CS3W-XXXXPB-AG (IEC 1000V)	BE)	CS6W-XXXXMB-AG (IEC1500V)
AN)	CS3L-XXXXPB-AG (IEC 1000V)	BF)	CS6W-XXXXMB-AG (IEC1000V)
AO)	CS3W-XXXXPB-AG (IEC 1500V)	BG)	CS7N-XXXXMB-AG
AP)	CS3L-XXXXPB-AG (IEC 1500V)	BH)	CS7L-XXXXMB-AG
AQ)	CS3K-XXXXMS-FG (IEC1000V)	BI)	CS7N-XXXXMB-AG (IEC1500V)
AR)	CS3W-XXXXMB-AG	BJ)	CS7L-XXXXMB-AG (IEC1500V)
AS)	CS3W-XXXXMB-AG (IEC1000V)	BK)	CS7N-XXXXMB-AG (IEC1000V)
AT)	CS3W-XXXXMB-AG (IEC1500V)	BL)	CS7L-XXXXMB-AG (IEC1000V)
AU)	CS6X-XXXXP-FG (IEC1000V)	BM)	CS6R-XXXXH-AG
AV)	CS6X-XXXXP-FG (IEC1500V)	BN)	CS6RA-XXXXH-AG
AW)	CS3K-XXXXMS-FG (IEC1500V)	BO)	CS6R-XXXXH-AG(IEC1500V)
AX)	CS3V-XXXXMB-AG	BP)	CS6RA-XXXXH-AG(IEC1500V)
AY)	CS3V-XXXXPB-AG	BQ)	CS6R-XXXXH-AG(IEC1000V)
AZ)	CS3V-XXXXMB-AG (IEC1500V)	BR)	CS6RA-XXXXH-AG(IEC1000V)
BA)	CS3V-XXXXPB-AG (IEC1500V)	BS)	CS6R-XXXXMB-AG
BB)	CS3V-XXXXMB-AG (IEC1000V)	BT)	CS6R-XXXXMB-AG(IEC 1500V)
BC)	CS3V-XXXXPB-AG (IEC1000V)	BU)	CS6R-XXXXMB-AG(IEC 1000V)
BD)	CS6W-XXXXMB-AG		

fulfills the requirements of the standard
die Anforderungen der Normen erfüllt
satisfait aux exigences des normes
soddisfa le esigenze della normative

DIN EN IEC 61730-1 (VDE 0126-30-1):2018-10; EN IEC 61730-1:2018+AC:2018
DIN EN IEC 61730-2 (VDE 0126-30-2):2018-10; EN IEC 61730-2:2018+AC:2018
EN 61215-1:2016
EN 61215-1-1:2016
EN 61215-2:2017
IEC 61215-1:2016
IEC 61215-1-1:2016
IEC 61215-2:2016
IEC 61730-1:2016
IEC 61730-2:2016

and therefore corresponds to the regulations of the Directive 2014/35/EU.
und damit den Bestimmungen der EG-Richtlinien 2014/35/EU genügt.
et, ainsi, correspond aux règlements de la Directive du Conseil 2014/35/EU.
e quindi corrisponde alla normativa del Directive 2014/35/EU.

The product was first marked with CE in 2007.

Das Produkt wurde erstmalig 2007 mit der CE-Kennzeichnung versehen

Le produit a été marqué la première fois avec CE en 2007

Il prodotto ha ottenuto il marchio CE nel 2007

Munich, March 22, 2022

CANADIAN SOLAR EMEA GMBH

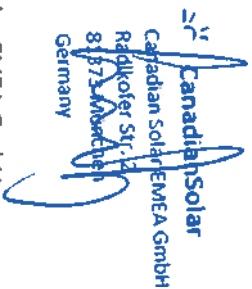
Radtkoferstrasse 2, 81373 Munich, Germany
Sitz / Registered Office: Munich, Registergericht / Registry Court: District Court Munich HRB 181 167,
Geschäftsführung / General Manager: Susanne Pflug
P +49 89 5199 6890

Declaration of Conformity

Directive 2014/35/EU (Low Voltage)



Place and Date of Issue
Ort und Datum der Ausstellung
Lieu et date d'établissement
Luogo e data di costituzione



Susanne Pflug
General Manager, Canadian Solar EMEA GmbH

* In the event of any inconsistency among different language versions of this document, the English version shall prevail.

* Diese deutschsprachige Version ist unverbindlich. Falls es Unterschiede zwischen dieser Version und der englischen Version dieses Dokuments gibt, ist die englische Version maßgebend.

* Cette version en langue française existe pour la seule commodité du lecteur. En cas de discordance entre cette version et la version anglaise de ce document, la version anglaise prévaut.

* La versione in italiano è redatta per comodità. In caso di discrepanze tra questa versione e la versione in inglese del documento, prevarrà la versione in inglese.